



# Car Log Management System and Analysis of Irregular Use

## The Challenge

Preventing irregular private use of company-owned vehicles, and guaranteeing that payroll taxes for car use paid by employees are correlated to the use of vehicles, by distinguishing between work-related and private activities.

## Our Solution

A car log system that transforms use of company-owned vehicles from an expense line to a tax-deductible item, by reliably analyzing car usage data.

The system creates periodic reports which sort kilometers/miles driven into three categories: work-related use, transport to-and-from work and after-hours leisure use.

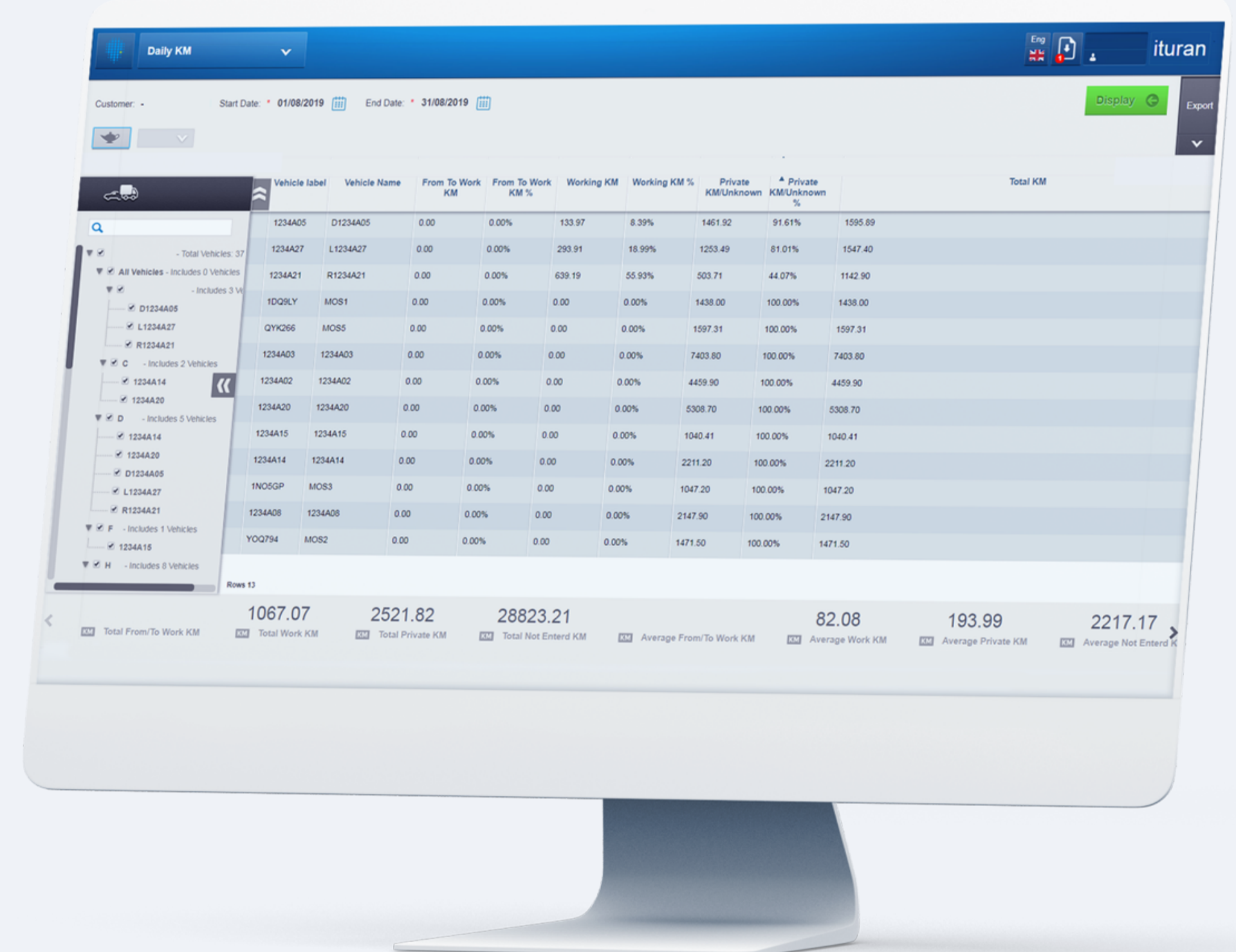
While using Driver Identification device (RFID/Keypad/Magnetic card/Dallas Key) the driver is required to report the purpose of the ride prior to ignition, the driver is required to report the purpose of every ride prior to ignition. The system analyzes the reported data, and displays it by vehicle or driver. Driver reporting is confirmed by additional time and location data.

Reports can be sent directly to the organization's accounting systems, or to a third party which can also provide legal and professional support services if needed.

## The Saving

Excessive tax payments due on use of each company vehicle can add up to substantial monthly and annual sums. Thanks to the Car log, employees using company-owned cars will pay less tax in every paycheck, without adding extra cost to the employer. In cases where employers compensate employees for car-related taxes, the savings are even greater as employers may also enjoy additional income.

- Tax returns are subject to approval by tax authorities
- Car log service deals only with data related to usage. Individuals using a company car on a regular basis are required to settle all other issues with relevant tax authorities



## Main Features

- A special panel for ride reporting, installed near the driver's seat
- Data saved in a secure Internet account hosted by Ituran, which can be retrieved if needed
- Simple report generation by car or driver showing: ride category, start/end time of each ride, origin/destination of each ride, number of kilometers driven and more.
- Easy interface to payroll software and optional support services (legal and professional) by third party

## System Components

- GPS/GPRS location identifier confidentially installed to enable fleet control
- Reporting panel installed near driver's seat
- Choice between ignition denial or alarm to remind driver to report
- Secure cloud-based data collection and reporting of Car log data
- Optional – support services by third party, including data analysis, legal and professional support

## How it works

01

Driver reports the purpose of every drive, prior to ignition

02

Reporting is received by fleet management software

03

The software analyzes data, and sorts use by driver and vehicle. Data is also supported by additional time and location information

04

Reports are automatically sent to internal or third party accounting systems and used in payroll tax calculation