

Keeping those who protect us safe

Ituran's solutions for Security & Defense Forces

Industry: Security & Defense Forces
Location: confidential

Ituran offers a suite of safety solutions catering to Security & Defense Forces, a segment characterized by driving speed and style that is fast, reactive to circumstances and somewhat erratic.

From sophisticated tools to increase control over the driving style of crews, through Driver ID and Geo-fencing software to ensure operational vehicles are limited to authorized use, to tailored solutions designed to answer specific safety challenges.



The Challenge

Our client, a large security & defense force, operates a fleet which includes thousands of armored vehicles used daily in logistically-intensive high-risk routine and field activities. In such fleets, addition to the challenges stated above, the frequent occurrence of rollover — where a vehicle tips over onto its side or roof — presents a significant safety challenge, which only increases when the drivers are young and their natural inclination towards risk is higher than average, as in case described here.

The Solution

Providing traffic-safety officers a technology-based tool that identifies dangerous driving patterns per each driver and allows the creation of training programs based on individual performance

By combining features from Ituran's flagship safety solutions, we developed a Driver Assistant system which allows traffic-safety officers to remotely identify the driver and track his driving behavior in real time, while following the vehicle's location and knowing where it is at any given moment. All while maintaining the highest level of communication security as required in operational organization.

System components:

Driver ID – requiring driver identification prior to ignition so that data is collected on each driver, and officer is notified if driver is not identified

G-force sensor – monitoring real-time data collected from the vehicle:

1. Driving related information including sudden braking and acceleration, sharp turns, high-speed driving over speed bumps, erratic overtaking, speeding and more
2. Engine information
3. When an accident occurs, data collected before during and after provides evidence on what really happened

GPS & modem – providing the exact location of the vehicle in real time

Panic button – triggered in dangerous and life-threatening situation, pressing the button sends an immediate alert to the officer

Physical shutdown key – an extra layer of security which allows complete paralyzation of vehicle systems, including GPS & modem signals so that it cannot be monitored

How does it work?

Our client defined two scenarios which require action:

1. Mild incidents – where what has been defined as problematic behavior occurs, but it is enough to alert the driver in real time by using a loud buzzer in order to get him back on track
2. Sever incidents – when driving behavior requires the immediate attention of a superior, in which case in addition to a buzz inside the vehicle, an alert is sent to a predefined recipients

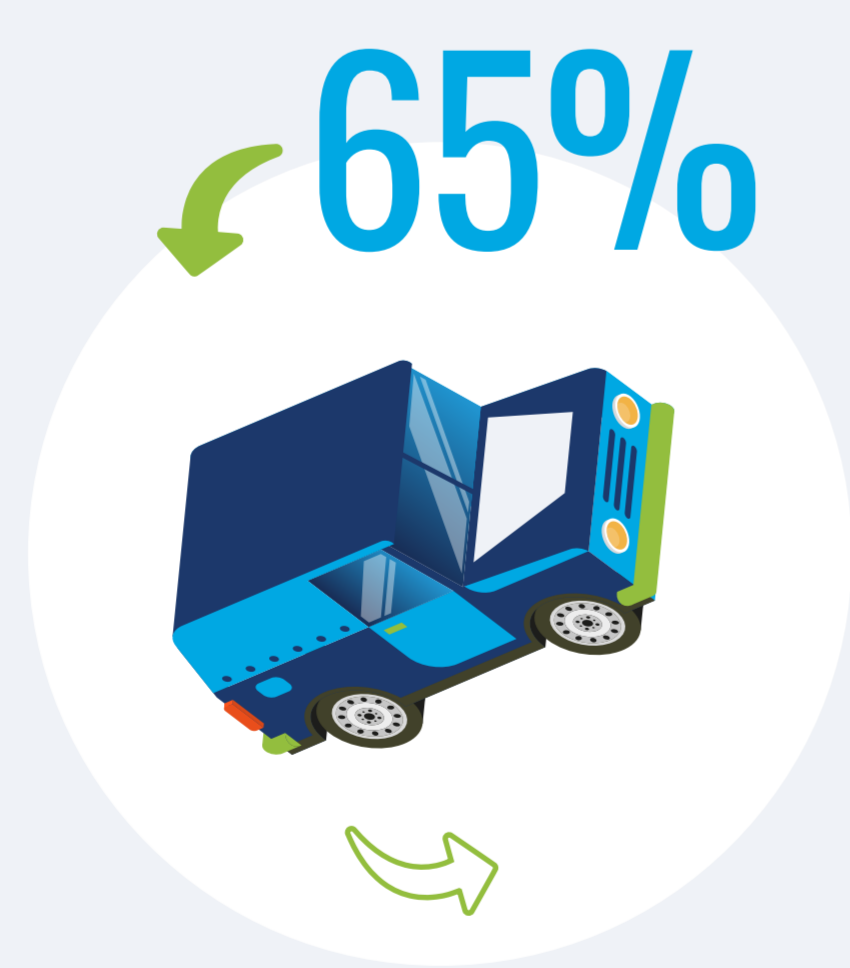
Both scenarios were defined in detail by our client and included, in addition to acceptable range of driving characteristics, times when each vehicle can be used, authorized drivers, geofencing parameters and more.

Reporting

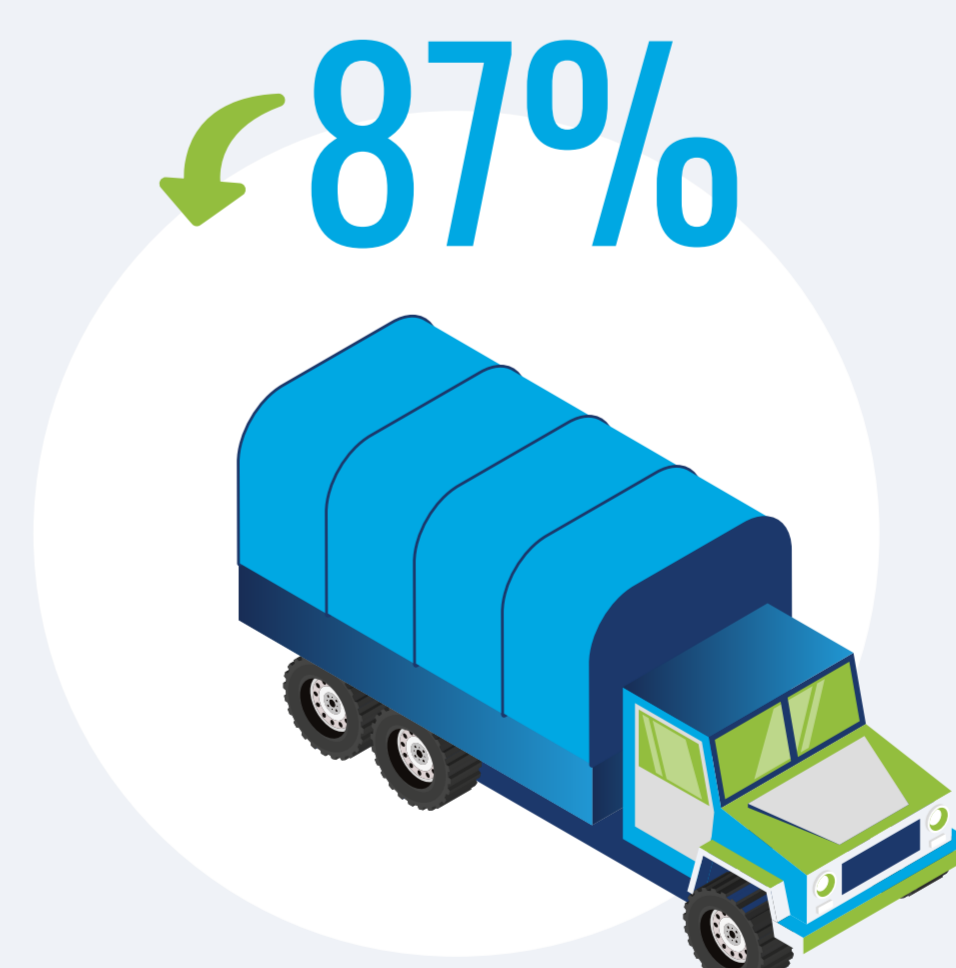
- Real time monitoring and alerts per vehicle
- Driver score generated by the system using data collected
- Daily, weekly, monthly automated report per driver and vehicle, vehicle groups or fleet
- Periodical reports on overall performance of vehicle groups or entire fleet

Results

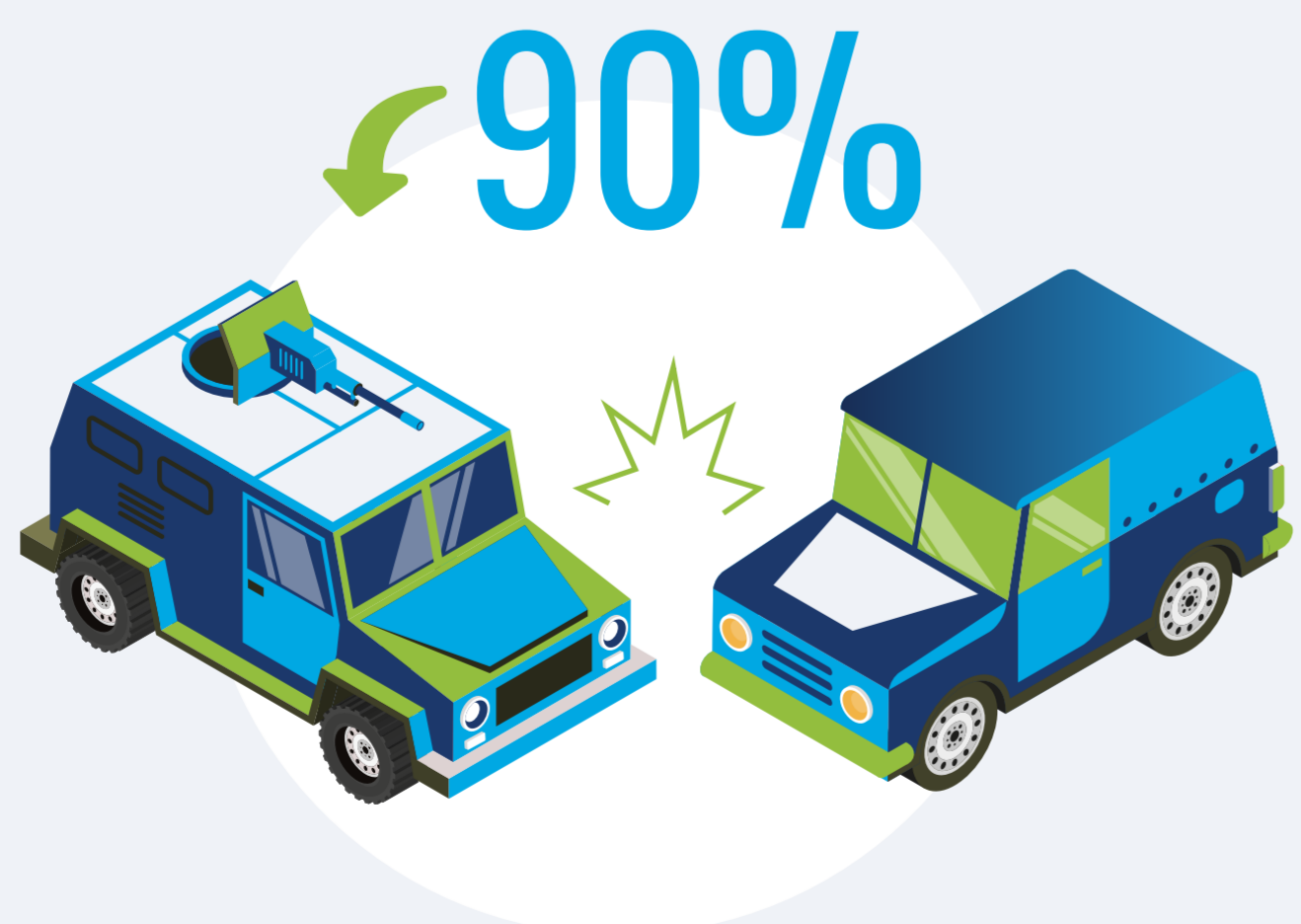
According to our client's reporting there has been:



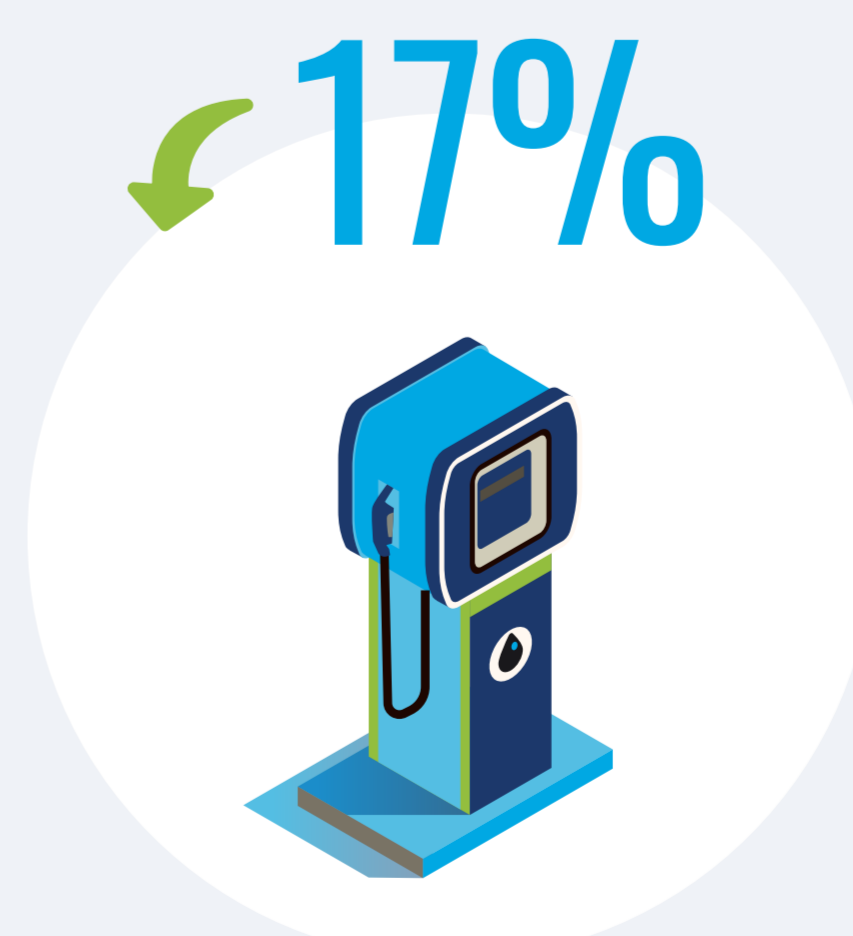
Decrease in vehicle rollover since Ituran's solution was implemented



Decrease in the occurrence of severe accidents of heavy vehicles



Decrease in casualties as a result from vehicle accidents in general



Savings in petrol cost was reported